

INSTRUCTIONS: 973 Mounting Plate

(For use with Kiene Model 900 and Model 900S Engine Stands)

APPLICATIONS: NAVISTAR MAXXFORCE 15L, CATERPILLAR 1673C, 1674, 1693, 3304, 3306, 3406A, 3406B, 3406E AND C-15 ENGINES

1. REMOVE ENGINE ACCESSORIES AND, ATTACH THE MOUNTING PLATE TO THE ENGINE AS DESCRIBED UNDER EACH ENGINE MODEL. MOUNTING LOCATIONS REFER TO THE STAMPED LOCATIONS ON THE MOUNTING PLATE.

NOTE: THE MOUNTING PLATE HAS 3 – 2" X 6" SPACERS WELDED TO ONE SIDE. ATTACH THE MOUNTING PLATE TO THE ENGINE SO THAT THESE ARE ON THE SIDE AWAY FROM THE ENGINE.

2. THE MOUNTING PLATE IS ATTACHED TO THE ENGINE USING THE COMPONENTS NOTED ABOVE UNDER EACH ENGINE MODEL. THE MOUNTING PLATE MUST BE SECURELY ATTACHED TO THE ENGINE WITH THE 2" X 6" SPACERS FACING AWAY FROM THE ENGINE.
3. WITH THE MOUNTING PLATE SECURELY FASTENED TO THE ENGINE, THE ENTIRE ASSEMBLY MAY BE LIFTED AND MOUNTED TO THE MODEL 900 ENGINE STAND, USING THE 6 - 5/8-11 X 1-3/4" HEX HEAD CAP SCREWS PROVIDED WITH THE STAND.
4. A COMPLETE REVIEW AND UNDERSTANDING OF THE "OPERATING INSTRUCTIONS FOR THE KIENE 900 & 900S ENGINE STANDS" SHOULD BE MADE PRIOR TO USING.

PARTS LIST

IN ADDITION TO ONE ADAPTER PLATE STAMPED "973", THE FOLLOWING ITEMS ARE ALSO INCLUDED. NOTE: HHCS = HEX HEAD CAP SCREW.

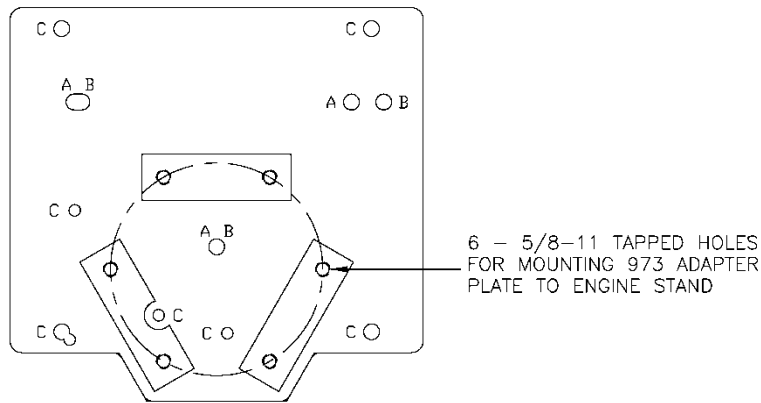
4 - 3/8-16 X 1-1/2" HHCS	4 - 3/8 FLAT WASHERS
2 - 3/8-16 X 1-1/2" HHCS, GRADE 8	8 - 5/8 FLAT WASHERS
1 - 3/8-16 X 4-1/2" HHCS, GRADE 8	1 - 7/8" DIA. X 2-13/16" SPACER
1 - 5/8-11 X 1-3/4" HHCS	1 - 1" DIA. X 3/8" SPACERS
1 - 5/8-11 X 2-3/4" HHCS	1 - 1" DIA. X 15/32" SPACER
2 - 5/8-11 X 3-3/4 HHCS	1 - 1" DIA. X 1-1/4" SPACER
2 - 5/8-11 X 5" HHCS	2 - 1" DIA. X 2" SPACERS
4 - 5/8-18 X 1-3/4" HHCS	2 - 1" DIA. X 2-1/4" SPACERS
1 - 5/8-18 X 2-3/4" HHCS	2 - 1" DIA. X 2-7/8" SPACERS
2 - 5/8-18 X 5" HHCS	2 - 1" DIA. X 3-1/4" SPACER

KIENE
DIESEL ACCESSORIES, INC.

UNIQUE
TRUCK EQUIPMENT

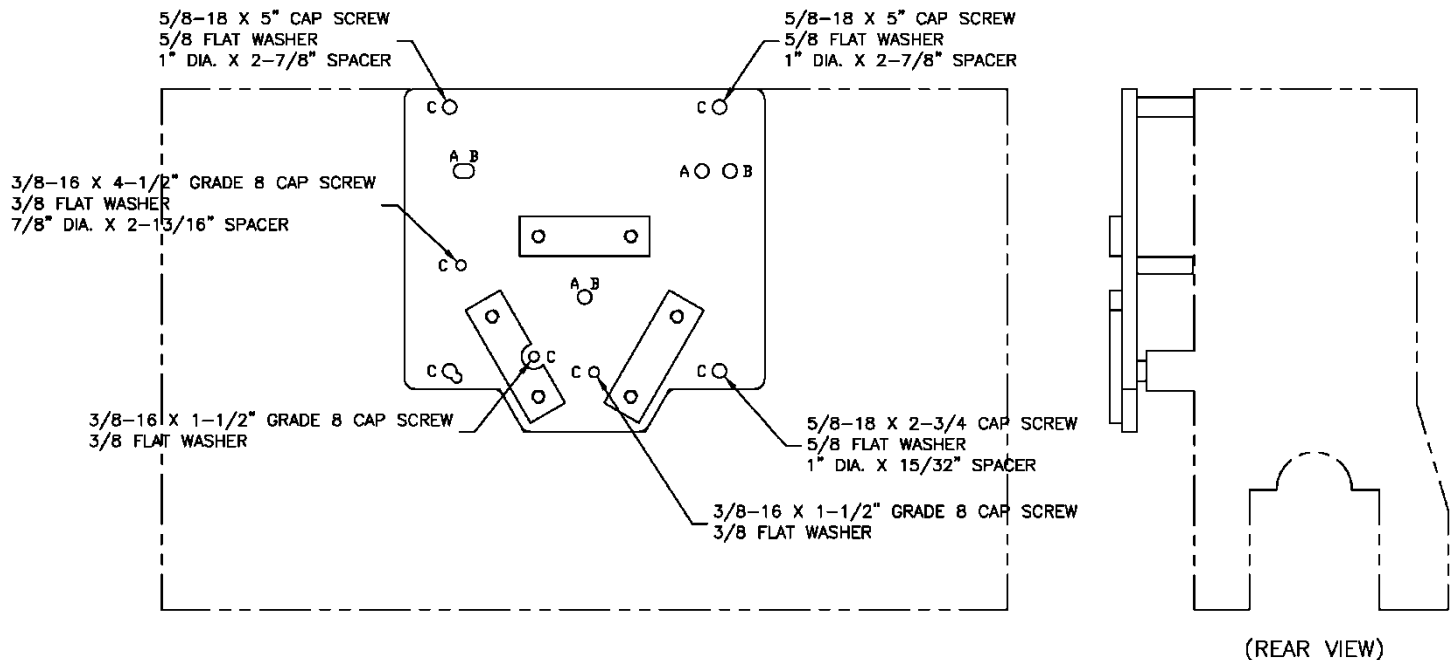
www.UNIQUETRUCK.COM
616-531-8868

973 ADAPTER PLATE MOUNTING HOLES



ENGINE MODEL APPLICATIONS

MOUNTING DETAILS FOR NAVISTAR MAXXFORCE 15L, CATERPILLAR 3406E AND C-15 ENGINES



FROM THE LEFT SIDE OF THE ENGINE REMOVE THE INTAKE MANIFOLD, AIR COMPRESSOR & MOUNTING BRACKET, POWER STEERING PUMP, AIR COMPRESSOR TO CRANKCASE COOLANT LINE, HIGH PRESSURE FUEL PUMP, FUEL FILTER HOUSING & BRACKET, ALL HIGH AND LOW PRESSURE FUEL AND RETURN LINES, HIGH PRESSURE FUEL RAIL, STARTER, DOSER MODULE, LINES FROM HIGH PRESSURE FUEL RAIL TO FUEL QUILL TUBES.

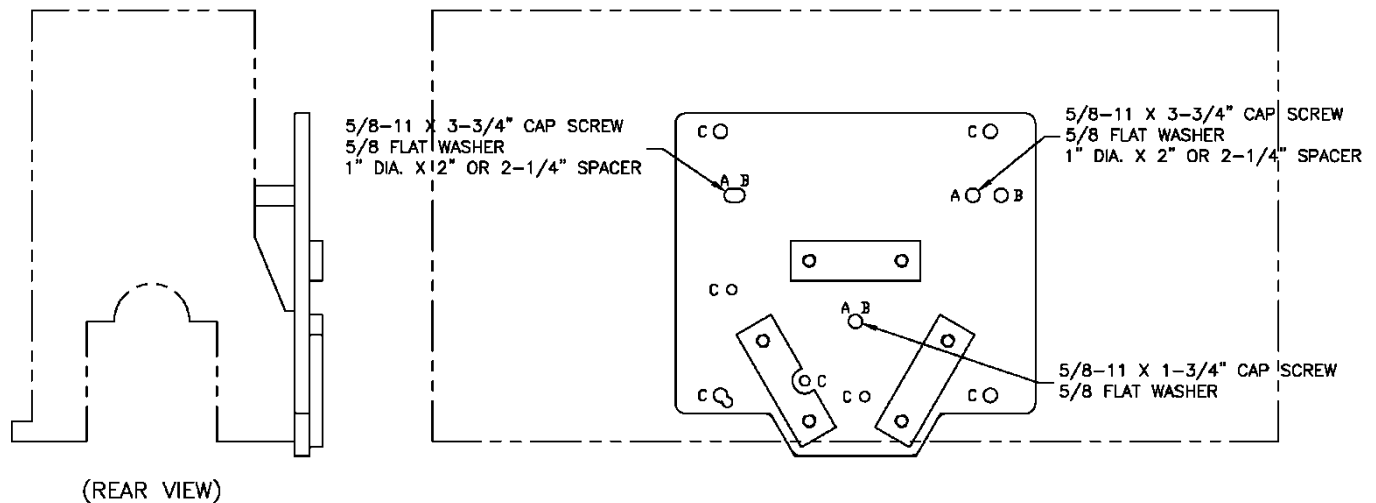
USE: 2 - 3/8-16 X 1-1/2" HHCS, GRADE 8 WITH WASHER
 1 - 3/8-16 X 4-1/2" HHCS, GRADE 8 WITH WASHER AND 7/8" DIA. X 2-13/16" SPACER
 1 - 5/8-18 X 2-3/4" HHCS WITH WASHER AND 1" DIA. X 15/32" SPACER
 2 - 5/8-18 X 5" HHCS WITH WASHER AND 1" DIA. X 2-7/8" SPACER

KIENE
 DIESEL ACCESSORIES, INC.

UNIQUE
 TRUCK EQUIPMENT

www.UNIQUETRUCK.COM
 616-531-8868

MOUNTING DETAILS FOR CATERPILLAR 1673C ENGINE

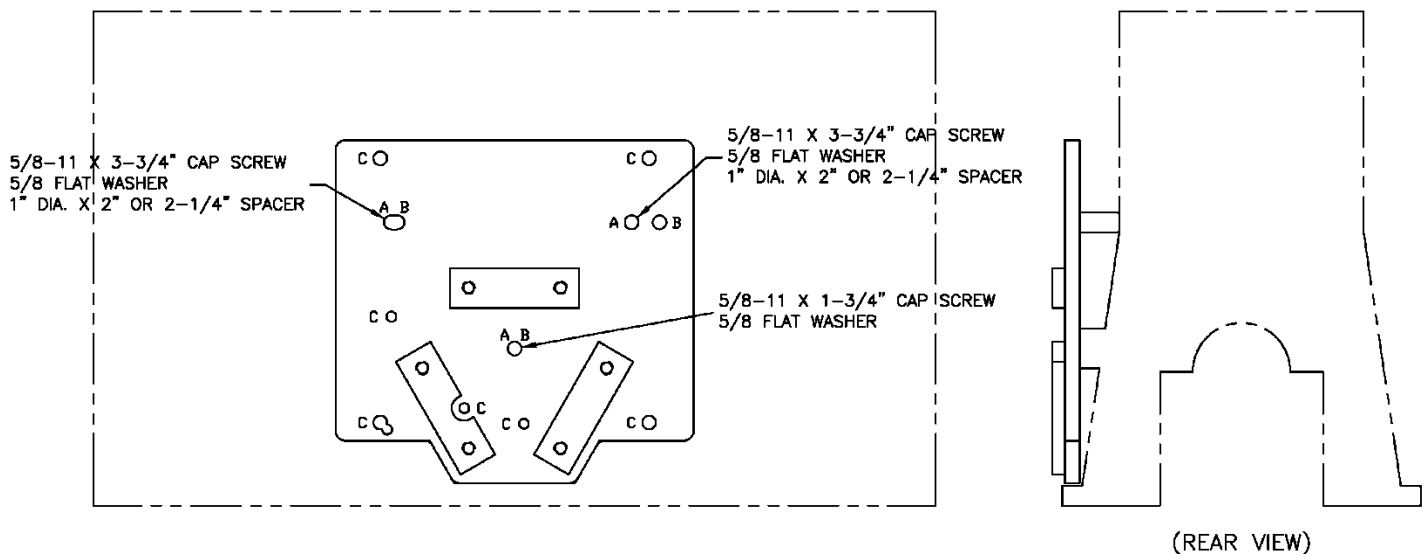


REMOVE STARTER MOTOR AND FUEL PUMP HOUSING FROM RIGHT SIDE OF ENGINE.

USE: 2 - 5/8-11 X 3-3/4" HHCS WITH WASHER
1 - 5/8-11 X 1-3/4" HHCS WITH WASHER
2 - 1" DIA. X 2" OR 2-1/4" SPACERS*

* DUE TO VARIATION IN THE HEIGHT OF THE 5/8-11 TAPPED BOSSES ON SOME MODEL 1673C, 1674, 1693, 3306 AND 3404 ENGINES, IT MAY BE NECESSARY TO "FIELD INSTALL" THE CORRECT SPACERS. SELECT SPACERS SO THAT THE ADAPTER IS MOUNTED PARALLEL TO THE SIDE OF THE ENGINE.

MOUNTING DETAILS FOR CATERPILLAR 1674 ENGINE



REMOVE STARTER MOTOR AND FUEL PUMP HOUSING FROM LEFT SIDE OF ENGINE.

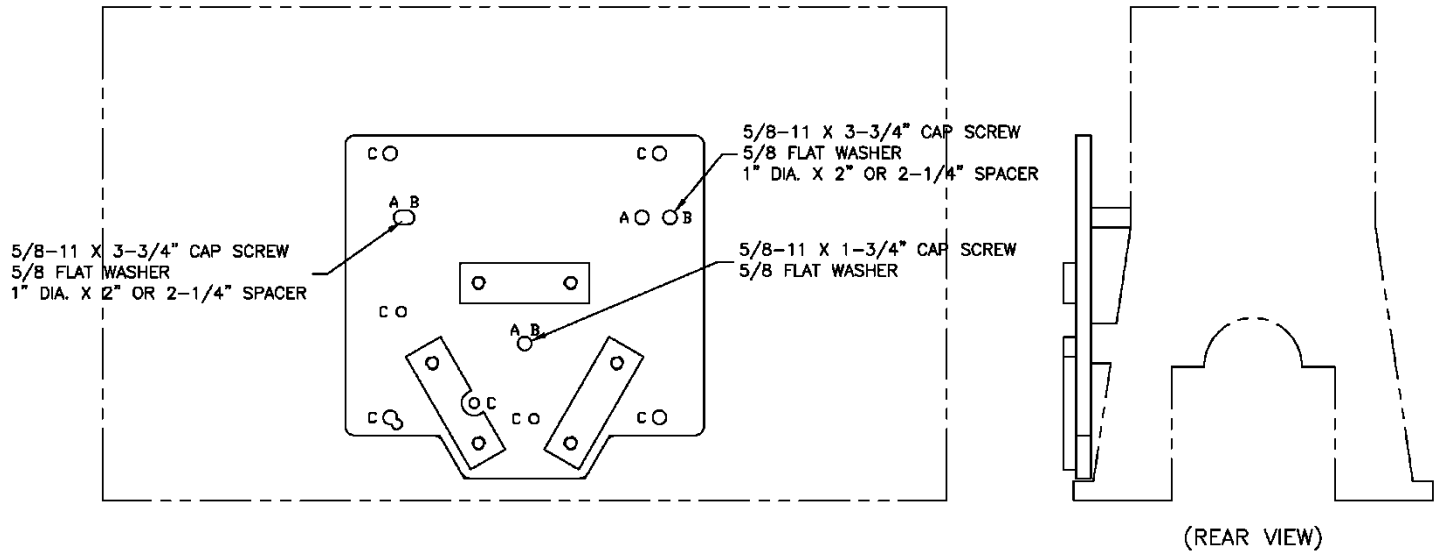
USE: 2 - 5/8-11 X 3-3/4" HHCS WITH WASHER
1 - 5/8-11 X 1-3/4" HHCS WITH WASHER
2 - 1" DIA. X 2" OR 2-1/4" SPACERS*

KIENE
DIESEL ACCESSORIES, INC.

UNIQUE
TRUCK EQUIPMENT

www.UNIQUETRUCK.COM
616-531-8868

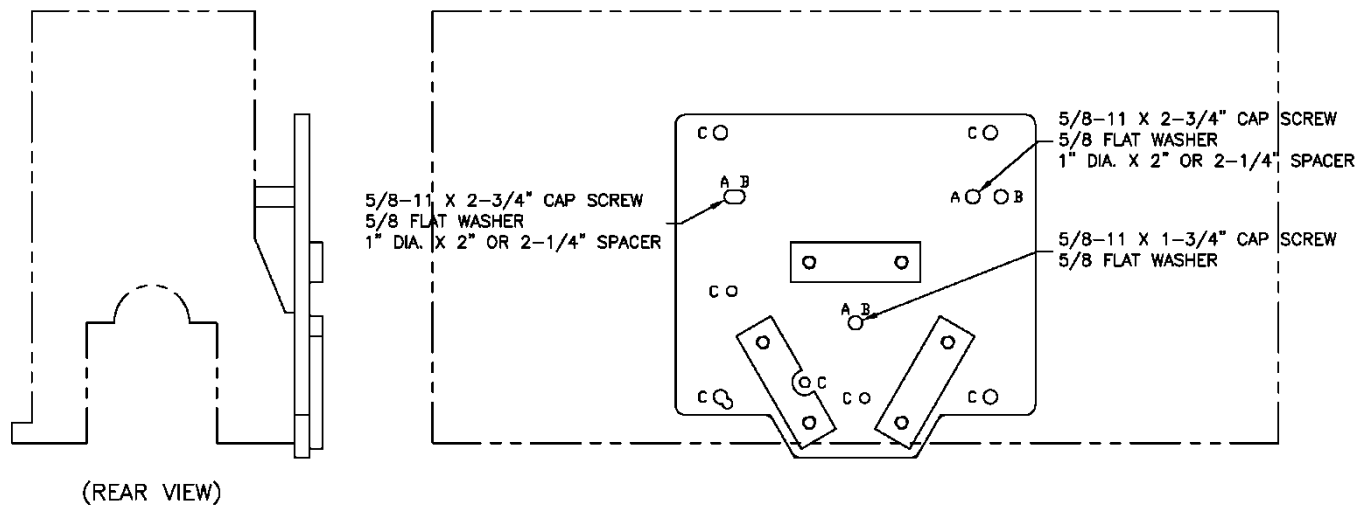
MOUNTING DETAILS FOR CATERPILLAR 1693 ENGINE



REMOVE STARTER MOTOR, AFTER COOLER WATER PIPING, POWER STEERING UNIT, AND AIR COMPRESSOR FROM THE LEFT SIDE OF THE ENGINE.

USE: 2 - 5/8-11 X 3-3/4" HHCS WITH WASHER
1 - 5/8-11 X 1-3/4" HHCS WITH WASHER
2 - 1" DIA. X 2" OR 2-1/4" SPACERS*

MOUNTING DETAILS FOR CATERPILLAR 3304 AND 3306 ENGINES



REMOVE FUEL PUMP TURBO DRAIN AND DIPSTICK HOLDER FROM RIGHT SIDE OF ENGINE.

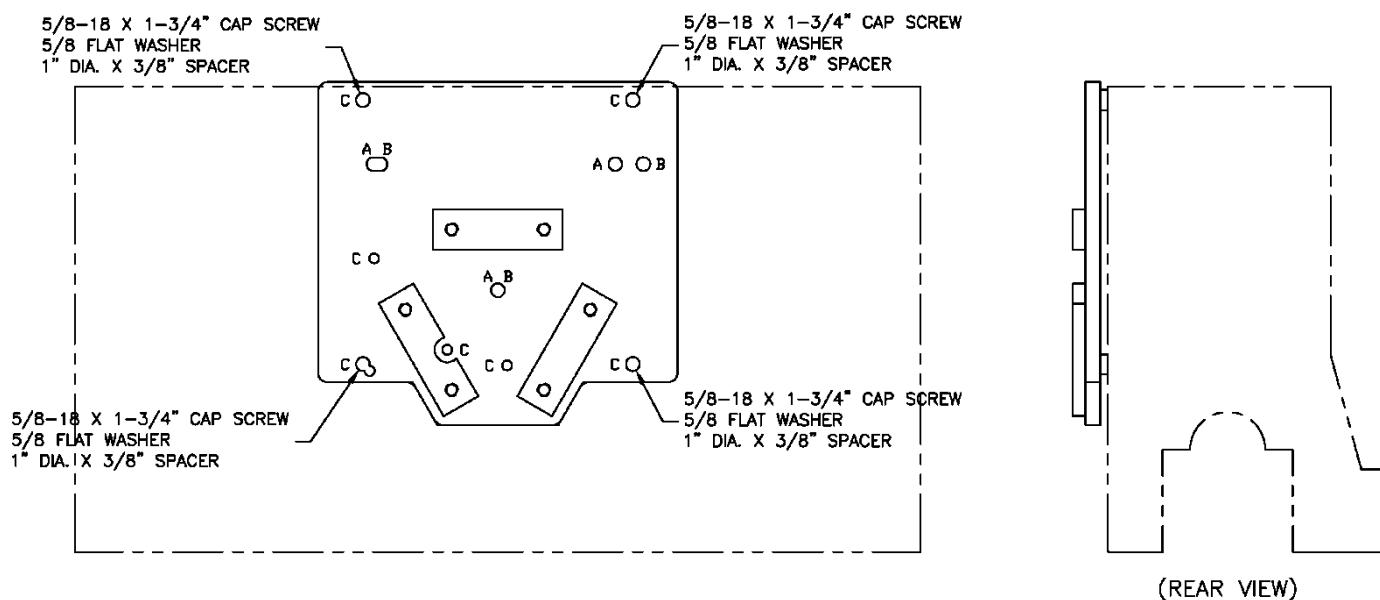
USE: 2 - 5/8-11 X 2-3/4" HHCS WITH WASHER
1 - 5/8-11 X 1-3/4" HHCS WITH WASHER
2 - 1" DIA. X 2" OR 2-1/4" SPACERS*

KIENE
DIESEL ACCESSORIES, INC.

UNIQUE
TRUCK EQUIPMENT

www.UNIQUETRUCK.COM
616-531-8868

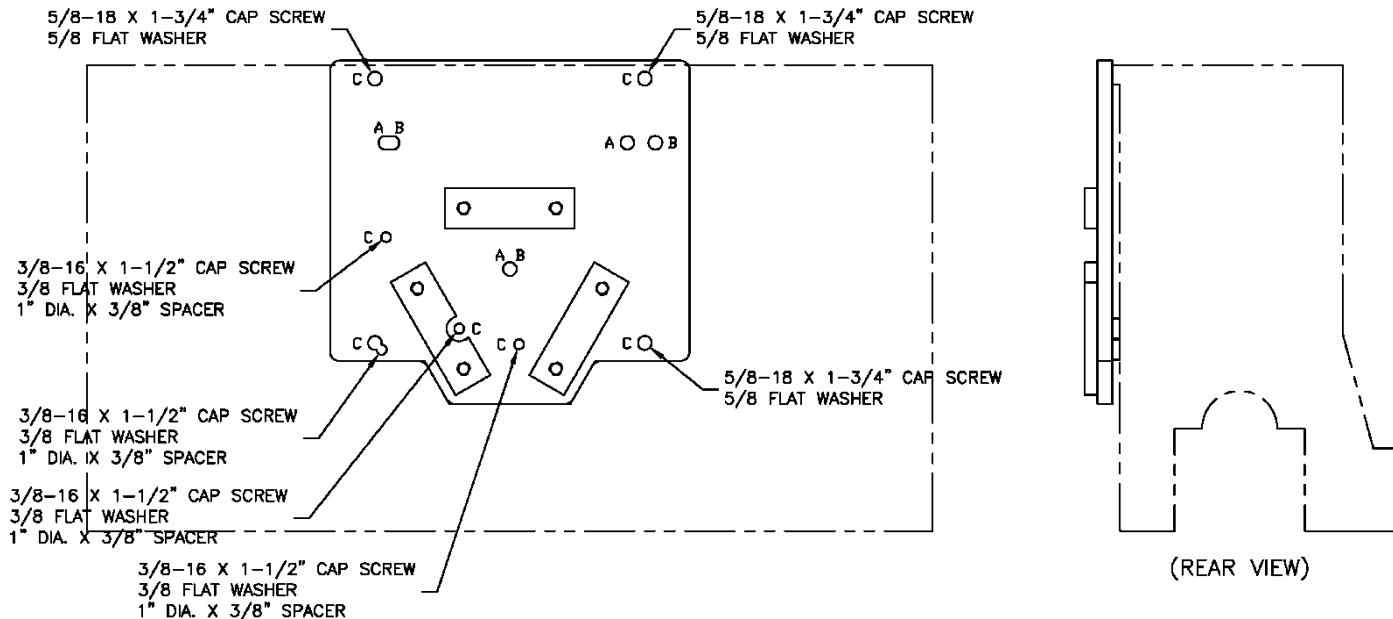
MOUNTING DETAILS FOR CATERPILLAR 3406A ENGINE



REMOVE FUEL INJECTION PUMP AND CAMSHAFT ACCESS PLACE FROM LEFT SIDE OF ENGINE.

USE: 4 - 5/8-18 X 1-3/4" HHCS WITH WASHER AND 1" DIA. X 3/8" SPACER

MOUNTING DETAILS FOR CATERPILLAR 3406B ENGINE



REMOVE FUEL INJECTION PUMP AND CAMSHAFT ACCESS PLATE FROM LEFT SIDE OF ENGINE.

USE: 3 - 5/8-18 X 1-3/4" HHCS WITH WASHER

4 - 3/8-16 X 1-1/2" HHCS WITH WASHER AND 1" DIA. X 3/8" SPACER

KIENE
DIESEL ACCESSORIES, INC.

UNIQUE
TRUCK EQUIPMENT

www.UNIQUETRUCK.COM
616-531-8868